



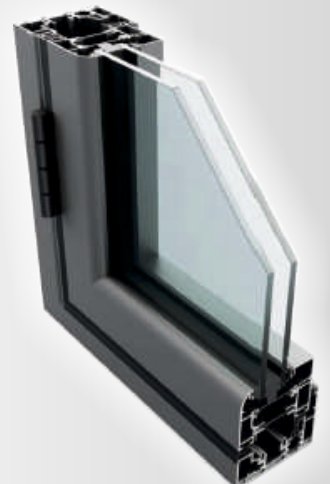
Home
Defence
System

ALUMINIUM BI-FOLDING DOOR SYSTEM



Coral's new aluminium bi-folding door system sets the standard for Style, Functionality, Security, and Performance.

- Tested and approved to PAS 024 High Security standards.
- **ULTION** 3 star High Security cylinder fitted as standard.
- Robust design: up to 100Kg per leaf. Available in divisions of up to 1020mm wide.
- Powder coated for a long life and low maintenance.
- Available in a multiple range of colours and finishes both inside and out.
- Weathertested to BS6375-1, BS6375-2 and BS6375-3 Annex A.
- Polyamide high performance thermal barrier giving average thermal values of 1.64 W/m²K.
- 15 year guarantee on Aluminium. 10 year guarantee on glazing.
- Designed to exceed current, and meet future building regs.
- Up to Seven panels per door are possible.
- Slim and Stylish sight lines.





Home
Defence
System

ALUMINIUM

www.coralwindows.co.uk

BI-FOLDING DOOR SYSTEM



Size Information

Minimum frame divisions = 680mm wide
Maximum frame divisions = 1020mm wide
Minimum frame height = 2014mm
Maximum frame height = 2300
Sizes exceeding above are P.O.A

Colour Information

Standard Colour Options
9910 Gloss White, 7016 Matt Anth Grey
9005 Matt Jet Black
Dual Colour 9910 White Internal
7016 Anth Grey External

Extended matt Colour range to compliment
Coral Base coloured foils
Chartwell Green, Blackbrown, Slate Grey
Cream, Fine Textured Graphite Grey.

Extended Colour range available with
Deceuninck White internal.

NOTE: NO COLOUR IS WOODGRAIN FOILED

Furniture Information

Master Handle & Intermediate Handles available
in:
White, Black, Satin Chrome, Chrome.

Tricklevents are available in white, grey, or black.

Hinges are always black as they are
located on the black gasket line of
the Bifolding Doors.

Survey to Install Time

Standard Colours
Appx 5 Weeks

Extended Colour Range Both Sides
Appx 6 Weeks

Extended Colour range on White
Appx 8 Weeks