



Composite Doors



Why choose Coral?



Yorkshire's Favourite

Established for over 3 decades, Coral Windows & Conservatories have become a customer favourite and market leading company within Yorkshire.

From our humble beginnings we have focused on putting our customers first and providing excellent service. We do not employ 'hard sell' tactics and will never talk you into a sale. The choice is always yours.

At our head office in Bradford you will find our manufacturing plant and showroom, which is one of the largest in the region. You can visit all our showrooms seven days a week and view a full range of our products at your leisure and enjoy a warm drink and a biscuit if you wish. You will also find our other showrooms across the county in Leeds, Wakefield, Huddersfield and Sheffield, if Bradford is not convenient. We would love to see you at any of our showrooms to show you how new windows, doors or a conservatory/orangery can transform your home.

No Deposit - No Stage Payments

All the work we undertake, no matter how large or small, is carried out on a no upfront payment basis.

Our customers are not asked for a deposit or cash at certain stages, you only pay on completion of the installation.

We believe this gives you peace of mind about the quality of our products and installation.



Pictures are for illustration purposes only.
Detailed moulding and colours may change depending on stock level.

Good looks that stand the test of time

The Coral Porta Classique III range of composite doors offer the look and feel of a timber door without any of the inherent problems, such as cracking, bowing or twisting. They have a high density foam core, which offers excellent strength and thermal performance, and a durable Glass Reinforced Plastic (GRP) skin to protect from the elements.

GRP is the same material that is used to make the hull of lifeboats – demonstrating just how tough it really is!

Unlike timber, composite doors are incredibly low maintenance, an occasional wipe over with a damp cloth will restore it to its original finish. Manufactured using the finest components, the Coral Porta Classique III range of composite doors are amongst the leading composite doors on the market today.



Devon Tate

Weather Resistant

Coral composite doors are designed to last in even the most extremes of weather, providing excellent protection from the elements for the end user.

Coral composites have been tested for overall air permeability of up to 600 pascals. A pascal is a unit of pressure equal to one newton per square metre(N/m²),

A double sealed outerframe and uPVC edgebanding not only helps improve thermal efficiency, it keeps the worst of the British weather at bay too.

Thermal Performance

As energy costs continue to rise, choosing a door that keeps in the heat and keeps out the cold is now more important than ever and our composite doors are amongst the most energy efficient on the market today.

The warm foam core of the Coral composite doors allows them to have a significantly better 'U' value than traditional timber doors and steel doors.

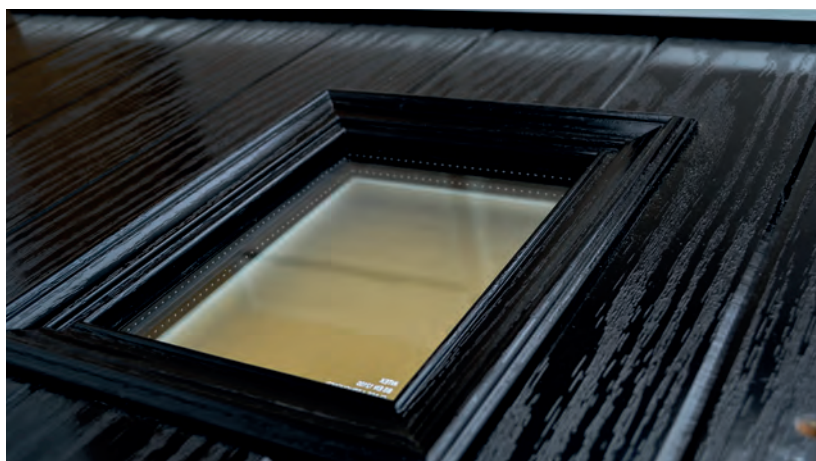
Our entire range meets with the requirements of the current Building Regulations to keep your home warmer and help reduce your energy bills.

Pictures are for illustration purposes only.
Detailed moulding and colours may change depending on stock level.

Security and performance

Coral composite doors offer a truly appealing finish for the entrance of any home, with a high definition embossed and grained GRP outer skin which will look stunning for years to come. The door offers stability from the elements with its inner core of LVL encased with composite stiles and rails for protection against any water ingress.

The inner core is manufactured from high density polyurethane foam, which offers exceptional thermal efficiency and will help reduce energy bills in comparison with traditional wooden, steel or PVC skinned solid core doors.



Colours

Coral composite doors are available in a wide range of styles and colours to suit a variety of consumer tastes and trends.

We offer composite doors in a standard range of colours:

Black, Blue, Green, Red, Light Oak, Rosewood and White as well as our popular Heritage colour range: Cotswold Blue, Cream, Chartwell Green, Anthracite Grey, Slate Grey and Moondust Grey.

A colour swatch can be found at the back of this brochure.



Glass & Glazing

We offer our customers a choice of doors in a variety of glazing configurations to suit every need. So whether you are looking for high levels of light, a more secure environment or you are wanting to replicate an existing door, we should have the style you need. Details of available obscure glass patterns can be found at the back of this brochure.



Pictures are for illustration purposes only. Door colours are a guide and are only as accurate as the printing process allows



York Cameo*

York

A classic design with two simple glass panels.
Suitable for any modern or traditional style of property.



Triline*



Cameo*



Square Lead



Diamond Lead



Pictures are for illustration purposes only.
Detailed moulding and colours may change
depending on stock level.

Daventry Glass is available in the four colour
options shown below.



Black*

Blue*

Red*

Green*



Green - Daventry*



Fulford



Coral Crystal

* Due to manufacturing constraints our Cameo, Triline, and Daventry Glass designs cannot be replicated in Top Lights and Side Panels, also they are not offered with any other alternative glass options including our usual Obscure and clear Glass options.

We would suggest either Arctic, Minster or Stippolyte alongside Cameo, and would suggest Stippolyte alongside Triline or Daventry.

Devon

A design which allows plenty of light into reception rooms or directly into a kitchen.



Tate*



Exeter



Penzance



Fusion Graphite*



Obscure Glass



Diamond Lead



Square Lead



Paris*

Pictures are for illustration purposes only. Detailed moulding and colours may change depending on stock level.

* Due to manufacturing constraints our Tate, Fusion Graphite and Paris Glass designs cannot be replicated in Top Lights and Side Panels, also they are not offered with any other alternative glass options including our usual Obscure and clear Glass options.

We would suggest either Stippolyte or Opti Opal alongside Tate, Fusion Graphite and Paris.





*Victorian Crystal

Victorian

The Victorian features a large single glass panel to allow plenty of light into those spacious turn-of-the-century hallways.



Coral Crystal



Crystal*



Fusion Graphite*

Pictures are for illustration purposes only. Detailed moulding and colours may change depending on stock level.



Opti Opal



Diamond Lead



Square Lead

* Due to manufacturing constraints our Crystal and Fusion Graphite Glass designs cannot be replicated in Top Lights and Side Panels, also they are not offered with any other alternative glass options including our usual Obscure and clear Glass options.

We would suggest either Stippolyte or Opti Opal alongside Crystal and Fusion Graphite.

Georgian 1

Featuring a distinctive semi-circular glazing panel, this door is ideal for the street-front property or town house



Trafalgar



Clear Glass



Obscure Glass



Diamond Lead



Square Lead



Opti Opal

Pictures are for illustration purposes only.
Detailed moulding and colours may change depending on stock level.

Georgian 3

The stately design of this 3-panel door echoes the classic architecture of the Regency period



Daventry*



Opti Opal



Tate*

Pictures are for illustration purposes only.
Detailed moulding and colours may change depending on stock level.

* Due to manufacturing constraints our Tate and Daventry Glass designs cannot be replicated in Top Lights and Side Panels, also they are not offered with any other alternative glass options including our usual Obscure and clear Glass options.

We would suggest either Stippolyte or Opti Opal alongside Tate, and would suggest Stippolyte alongside Daventry.

Edwardian 2 & 4

A stylish, traditional door offering varying degrees of privacy.



Daventry*



Daventry*

Pictures are for illustration purposes only.
Detailed moulding and colours may change depending on stock level.

* Due to manufacturing constraints our Daventry Glass design cannot be replicated in Top Lights and Side Panels, also they are not offered with any other alternative glass options including our usual Obscure and clear Glass options.

We would suggest Stippolyte alongside Daventry.



Tudor

Reminiscent of the door styles of the 1930's, the Tudor is also available as a solid door option as well as a glazed version



Clear Glass



Traditional House Number



Diamond Lead

Pictures are for illustration purposes only. Detailed moulding and colours may change depending on stock level.



Square Lead



Infinity*



Sandblast House Number

* Due to manufacturing constraints our Infinity Glass design cannot be replicated in Top Lights and Side Panels, also they are not offered with any other alternative glass options including our usual Obscure and clear Glass options.

Sandblast House Number is created with lead and Sandblast effect film within the number onto the clear external pane.

We would suggest either Stippolyte or Opti Opal alongside Infinity.

Farmhouse Cottage Range

Our farmhouse cottage range has a unique 'offset etched' detailing



Farmhouse Cottage Diamond



Farmhouse Cottage Solid

Pictures are for illustration purposes only. Detailed moulding and colours may change depending on stock level.



Farmhouse Cottage 1 Daventry*

* Due to manufacturing constraints our Daventry Glass design cannot be replicated in Top Lights and Side Panels, also they are not offered with any other alternative glass options including our usual Obscure and clear Glass options.



Farmhouse Cottage Solid

Farmhouse Cottage 4

The Cottage 4 is a very popular contemporary door design



Triline*



Abstract*



Cameo*



Fusion Graphite*



Diamond Lead



Square Lead



Opti Opal*

Pictures are for illustration purposes only.
Detailed moulding and colours may change
depending on stock level.

* Due to manufacturing constraints our Cameo, Fusion Graphite, Triline, and Abstract Glass designs cannot be replicated in Top Lights and Side Panels, also they are not offered with any other alternative glass options including our usual Obscure and clear Glass options.

We would suggest either Arctic, Minster or Stippolyte alongside Cameo, either Stippolyte or Opti Opal alongside Fusion Graphite, Opti Opal alongside Abstract and Stippolyte alongside Triline.

Regal

With its American style, large glazed feature panel, the Regal door is proving to be just as popular here in the UK as it is 'over the pond'.



Modena*



Reflections*



Square Lead



Tate

Pictures are for illustration purposes only. Detailed moulding and colours may change depending on stock level.

* Due to manufacturing constraints our Modena, Reflections and Tate Glass designs cannot be replicated in Top Lights and Side Panels, also they are not offered with any other alternative glass options including our usual Obscure and clear Glass options.

We would suggest either Opti Opal or Clear alongside Modena or Reflections and would suggest either Stippolyte or Opti Opal alongside Tate.





Verona Triline*

Verona

With its contemporary linear etched detailing, the Verona is a stunning door available either glazed or as a solid door



Infinity*

Pictures are for illustration purposes only. Detailed moulding and colours may change depending on stock level.



Tate*



Deco*

* Due to manufacturing constraints our Infinity, Tate, Deco, and Triline Glass designs cannot be replicated in Top Lights and Side Panels, also they are not offered with any other alternative glass options including our usual Obscure and clear Glass options.

We would suggest either Stippolyte or Opti Opal alongside Infinity, Tate or Deco, and Stippolyte alongside Triline.

Farmhouse Georgian 2

Two semi-circular panels create a modern distinctive style door



Half Moon Eclipse*



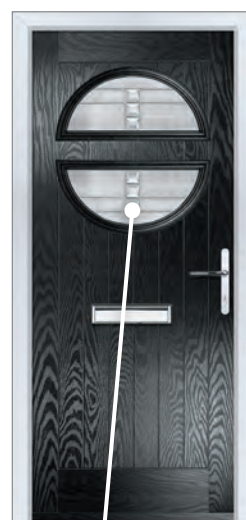
Tate*



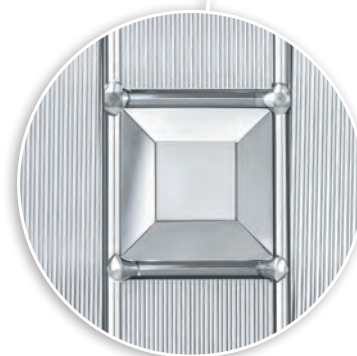
Opti Opal



Cameo*



Milan*



Pictures are for illustration purposes only.
Detailed moulding and colours may change depending on stock level.

* Due to manufacturing constraints our Cameo, Tate, Milan and Eclipse Glass designs cannot be replicated in Top Lights and Side Panels. also they are not offered with any other alternative glass options including our usual Obscure and clear Glass options.

We would suggest either Arctic, Minster or Stippolyte alongside Cameo or Half Moon Eclipse and would suggest either Stippolyte or Opti Opal alongside Tate or Milan.



Door Colour Options

Our colour collection has been specially designed to help you put together the perfect colour palette for your door. Every home is different and our beautiful range of colours combines both muted heritage shades and bolder vibrant options, to harmonise with your home and to keep it looking good for years to come.

Doors are supplied with a white internal colour as standard, however, coloured both sides is available on request.



White



Green



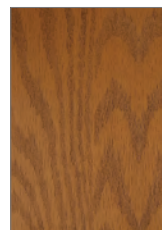
Black



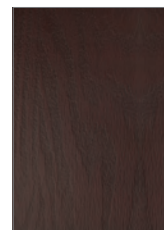
Blue



Red



Golden Oak



Rosewood



Cream



Chartwell



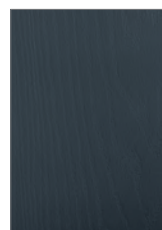
Cotswold Blue



Moondust Grey



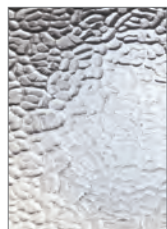
Slate



Anthracite

White, Green, Black, Blue, and Red doors will be supplied with a colour co-ordinated weather bar, all other doors will have either a silver or gold weather bar to compliment the threshold.

Obscure Glass Patterns



Arctic™



Autumn™



Chantilly™



Charcoal™



Contora™



Cotswold™



Digital™



Everglade™



Flemish™



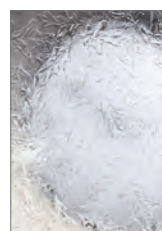
Florielle™



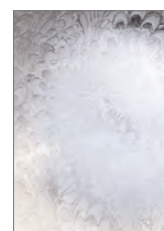
Mayflower™



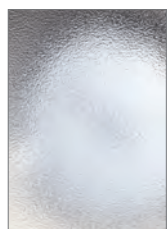
Minster™



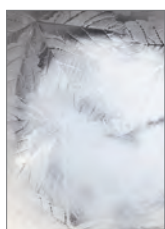
Oak™



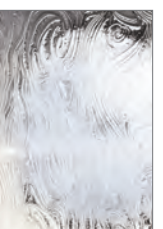
Pelerine™



Stippolyte™



Sycamore™



Taffeta™


Coral™
Composite Doors

Grain effect & Colour will differ between foiled grains and GRP composite grains, which is unavoidable due to the manufacturing process of different materials.

All glazed units in Coral Composite Doors have black warm-edged spacer bar for added energy efficiency.

Door colours are a guide and are only as accurate as the printing process allows.

Pictures are for illustration purposes only.





The Coral Fish. The fish lives in the Coral Reef and feels safe and secure. In nature the fish protects the Coral. In our hands the Coral Customer is safe and secure, in return the Customer gives life to Coral.

Tel: Freephone 0800 669955
www.coralwindows.co.uk